



Domus 1

2.5" Economical Pressure Relief Bubble Pad System

Domus 1 is ideal for prevention and treatment of patients at low risk of pressure ulcers. This light weight and compact alternating pressure pad is composed of 2.5"-height bubble cells, and it is used as an alternative for heavier products such as gel overlay mattresses. The system is great for short term usage and easy to install. With a pressure adjustable pump and extension flaps on top and bottom sides of the bubble pad to prevent the pad from sliding, Domus 1 is designed to be a great transition mattress for homecare.

Domus 1

2.5" Economical Pressure Relief Bubble Pad System

Features ▼

- Easy to use adjustment settings.
- Flame retardant and medical grade bubble pad.
- Adjustable hangers for most bed types.



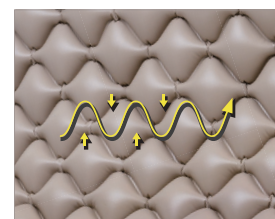
Adjustable Hangers
Suitable for most bed types.



Weight Indicator Reference
To facilitate optimized pressure setting.



Extension Flaps
Can be tucked under the standard mattress for stabilization.



Medical Grade PVC Pad
Easy to clean and fire retardant.

Specification

Model	Domus 1	
Pump	Dimension	23.7 x 11.2 x 9.5 cm
	Weight	1.4 kg
	Case Material	Flame retardant ABS
	Supply Voltage	AC 230V, 50 / 60 Hz ; 120V, 60Hz
	Operating Cycle	9.6 min (230V) ; 8 min (120V)
Mattress	2.5" Bubble Pad Overlay	
	Dimension	196 x 90 x 6.4 cm
	Alternating	1 - in - 2
	Cell Height	2.5" x 130 pcs of bubbles
	Weight	2.3 kg
	Material	Medical - grade PVC
	Maximum Patient Weight	100 kg
Flame Retardant Standards	CA 117	

Distributed by

HEADQUARTERS
Wellell Inc.

T +886 2 2268 5568
F +886 2 2268 6525
marketing@wellell.com

Manufacturer

Apex Medical Corp
No. 9, Min Shen St., Tu-Cheng,
New Taipei City, 236004, Taiwan

www.wellell.com

Print-2022/04 All rights reserved
Specifications may change without notice.





Domus 2s

Alternating Pressure Redistribution System

Domus 2s is an easy-to-use system to provide effective support to the patient. It is a 5" height one-piece mattress overlay with heel slope for better heel pressure relieve, it also features 1 in 2 alternating pressure relief function to aid in the prevention and treatment of pressure ulcers. Domus 2s is an ideal system that provides effective pressure relief with comfort in a cost-effective manner to patients who are assessed to be at low to medium risk of developing pressure ulcers.

Domus 2s

Alternating Pressure Redistribution System

Features ▼

- Easy to use adjustment settings.
- Adjustable hangers for most bed types.
- Flame retardant and medical grade one piece pad.
- Easy to use one piece design without extra air hose tubing.



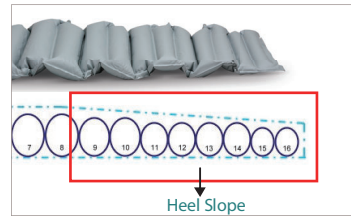
Adjustable Hangers
Suitable for most bed end panels.



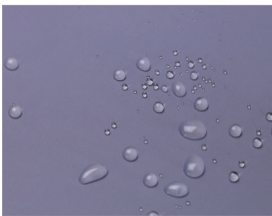
Weight Indicator Reference
To facilitate optimized pressure setting.



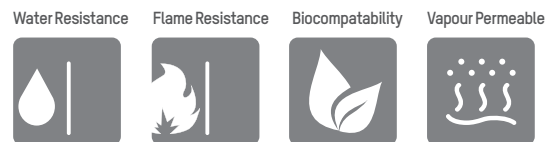
Extension flaps
Can be tucked under the standard mattress for stabilization.



Heel slope (to relieve pressure on the heels)
Allow the pad to fill in the space behind the Achilles tendons so that pressure is distributed over the entire lower legs, reducing pressure on the heel.



Optional Nylon/PU Cover
Vapor permeable and water resistant with basic flame retardant level.

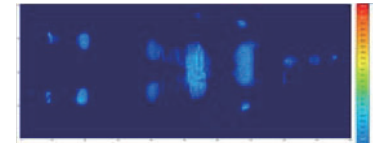


Patient: 170 cm/ 80 kg/ Male

Inflation of A cells



Inflation of B cells



Specifications

Model	Domus 2s	
Pump	Dimension	23.7 x 11.2 x 9.5 cm
	Weight	1.2 kg
	Case Material	Flame retardant ABS
Mattress	Supply Voltage	AC 230V, 50 / 60 Hz ; 120V, 60Hz
	Operating Cycle	9.6 min (230V) ; 8 min (120V)
		5" Overlay Mattress
	Dimension	200 x 85 x 12.5 cm (H5") w/heel slope at 9 cm(3.5")
	Alternating	1 - in - 2
	Cell Height	16 x 5" ~ 3.5" cells
	Weight	3.1 kg
	Material	Medical - grade PVC
	Maximum Patient Weight	120 kg
	Flame Retardant Standards	EN 597-1 & EN 597-2

Specifications are subject to change for improvement without notice.

Distributed by

HEADQUARTERS

Wellell Inc.
T +886 2 2268 5568
F +886 2 2268 6525
marketing@wellell.com

Manufacturer

Apex Medical Corp
No. 9, Min Shen St., Tu-Cheng,
New Taipei City, 236004, Taiwan

www.wellell.com

Print-2021/12 All rights reserved
Specifications may change without notice.

